



RX DC X-RAY UNIT	
Generator	Constant potential, microprocessor-controlled
Working frequency	145 - 230 KHz with self-adjustment (typically 175 KHz)
Focal spot	0.4 mm (IEC 336)
Total filtration	2 mm @ 60 kV / 2 mm @ 65 kV / 2 mm @ 70 kV (*)
Anode current	4 / 8 mA
Voltage at X-ray tube	60 / 65 / 70 kV (*)
Exposure times	0.020 – 1.000 seconds, R'10 and R'20 scale
Source-skin distance	20 and 30 cm
Irradiated field	Ø 60 mm and Ø 55 mm [with round cone]
Additional collimators	35 x 45 mm (with rectangular cone for size 2 sensors), 31 x 41 mm and 22 x 35 mm, for size 1 and size 0 sensors
Power supply	50/60 Hz, 115-120 V AC ±10% or 230-240 V AC ±10%
Duty Cycle	Continuous operation with self-adjustment up to 1s/90s total
Arms (for Standard version only)	Available in 3 lengths: 40 cm – 60 cm – 90 cm
Max arm extension	230 cm, from wall
Versions	Standard (wall mounted) or Mobile (on portable cart)
Dose delivered	Viewing on a handheld device with digital archive option on PC via iRYS software which can be automated via the “USB connect” (optional) accessory
PC connection cable	Serial with USB adapter available in various lengths

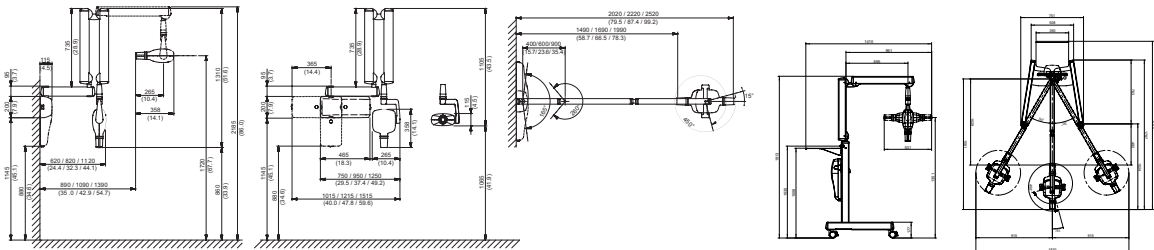
RX DC SOFTWARE	
Acquisition software (for PC)	iCapture with dedicated X-VS image filters for third-party software and for automatic storage of RX DC exposure parameters on PC
Image management software (for PC)	iRYS [compliant with ISDP©10003:2020 in accordance with EN ISO/IEC17065:2012 - certificate number 2019003109-3] and iPad iRYS viewer App (free)
Protocols supported in iRYS	DICOM 3.0, TWAIN, VDDS
DICOM Node Connectivity	IHE compliant [Print; Storage Commitment, SR document; WorkList; MPPS; Query/Retrieve]
X-ray log	iRYS feature to associate exposure parameters with the X-ray images of each examination (exportable in PDF or CSV format)

RX DC MINIMUM SYSTEM REQUIREMENTS	
Supported operating systems	Microsoft® Windows® 10, 11 Professional 64 bit
Processor	Intel Core i3 or higher
RAM	4 GB [8 GB recommended]
Display settings	1280 x 1024; 1344 x 768 or higher, 16 million colours
Port	USB 2.0 or later versions
Power supply	5 V DC, 500 mA (via USB)

[\*] values depend on the country where the product is marketed



RX DC



**BU Medical Equipment**  
**Sede Legale ed Amministrativa / Headquarters**  
CEFLA s.c.  
Via Selice Provinciale, 23/a  
40026 Imola (BO) - Italy  
t. +39 0542 653111  
f. +39 0542 653344  
sternweber@sternweber.com  
sternweber.com

**Stabilimento / Plant**  
Via Bicocca, 14/C  
40026 Imola (BO) - Italy  
t. +39 0542 653441  
f. +39 0542 653601



RX DC X-RAY UNIT

The images and technical specifications shown in this catalog are for indicative purposes only. As part of ongoing technological updates, technical specifications may be subject to changes without prior notice. In accordance with current regulations, in non-EU areas some products, as well as certain technical specifications, may have different availability and configurations. We encourage you to always contact your local distributor for up-to-date technical specifications, availability and configurations.

11/2025 SRXDCGB24/IS00



STERNWEBER.COM

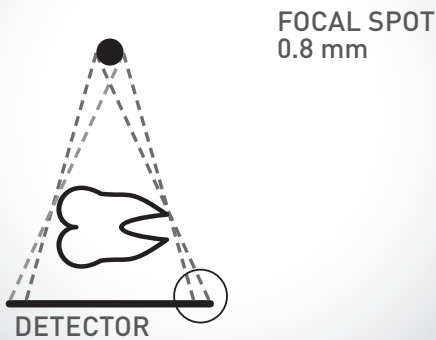




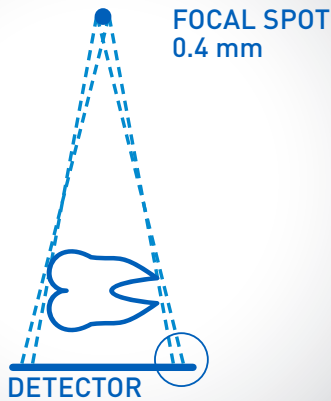
High definition images

Precise details, excellent image definition, sharp edges and low X-ray doses for patients.  
Thanks to the small focal spot (0.4mm) and the built-in collimator, RX DC increases X-ray parallelism, achieving a source-to-skin distance of 30 cm.

BLURRING DETECTOR



DEFINITION DETECTOR

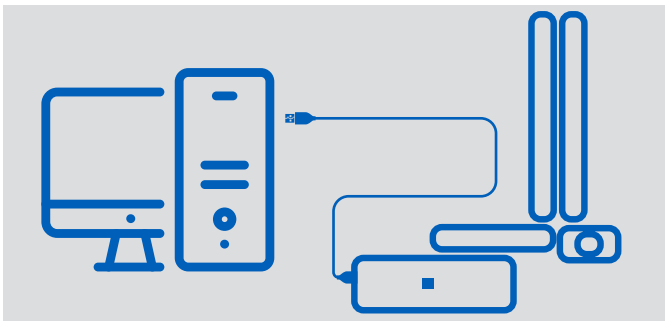


Technology fuelling  
innovation

High quality imaging, low X-ray doses, versatility and ergonomic design: the best technology can offer. RX DC is a cutting-edge X-ray unit, designed to maximise in-surgery efficiency. RX DC provides top-drawer imaging with outstanding detail thanks to a constant potential high frequency (DC) generator. With a very small focal spot (0.4 mm) it is possible to obtain sharp images with ultra-high definition. RX DC maximises both imaging performance and patient comfort while significantly lowering X-ray exposure doses.  
Highly versatile and easy to install, the X-ray unit has arms with an integrated self-balancing system that allows them to be pointed in 4 directions - available in the following lengths: 40, 60 and 90 cm. Thanks also to the protractor with graduated scale, positioning of arms and head is stable and easy.

Freedom of movement

Thanks to its cart, the RX DC unit moves in perfect synchronism with the workstations, adapting to the demands of a dynamic surgery.



**USB Connect**  
USB Connect is the new optional accessory to easily connect the RX DC unit to a PC via a USB port. The dose-related data will be directly associated with the patient imaging in their medical record by the iRYS software, updating the X-ray log. USB Connect allows the dose value to be monitored over time, viewed and exported to other applications thanks to a shareable file.



**Automatic parameters**  
Optimal results, personalised according to patient build and the area under investigation. Automatic exposure parameter modulation and accurate power selection make this the perfect X-ray unit in any situation.



**Smart control**  
The handheld control unit has a large display allowing for fast, user-friendly selection of the most suitable X-ray image capture programme and checking of the administered X-ray dose. The fast, dynamic duty cycle also allows real-time control of head tube temperature.